



Ports and Yachting Directorate



Malta Transport

NOTICE TO MARINERS NO 02 OF 2010

Our Ref: MT/PYD/88/06

15 January 2010

Malta Transport
Malta Transport Centre
Xatt l-Għassara ta' l-Għeneb
Marsa, MRS 1917,
Malta

Tel: (356) 2122 2203
Fax: (356) 2125 0365
Email: info@transport.gov.mt

www.transport.gov.mt

Restricted Area between “Ponta ta’ l-Ahrax” and “Dahlet ix-Xilep”

The Ports and Yachting Directorate, Malta Transport notifies that as part of an EU LIFE project, aimed at protecting the Yelkouan Shearwaters (**GARNIJA**), seabirds that breed on cliffs a restricted area is established. One such breeding area is located at “Rdum tal-Madonna” on the cliffs between il-Ponta ta’ l-Ahrax and Dahlet ix-Xilep. The “Rdum tal-Madonna” breeding colony has been designated as a “Special Protection Area” because Malta has 10% of the world’s population of Yelkouan Shearwaters and is internationally important for these birds. Light and noise can easily disturb the birds and cause them to desert the colony.

The buffer zone to the “Special Protection Area (SPA)” (about 1.1 Nautical Mile from shore) lies between the following imaginary points and the intermediate coastline:

	LATITUDE (N)	LONGITUDE (E)
(A)	35°59'.268	14°22'.574
(B)	35°59'.231	14°23'.759
(C)	36°00'.624	14°23'.088
(D)	36°00'.874	14°22'.692
(E)	35°59'.901	14°22'.057

In view of the above Masters of all vessels and craft are to adhere to the following conduct while transiting the area between **1st February and 30 July - every year**. The hours between which the conduct is applicable are **2 hours before sunset till 2 hours after sunrise**.

During the above mentioned period:

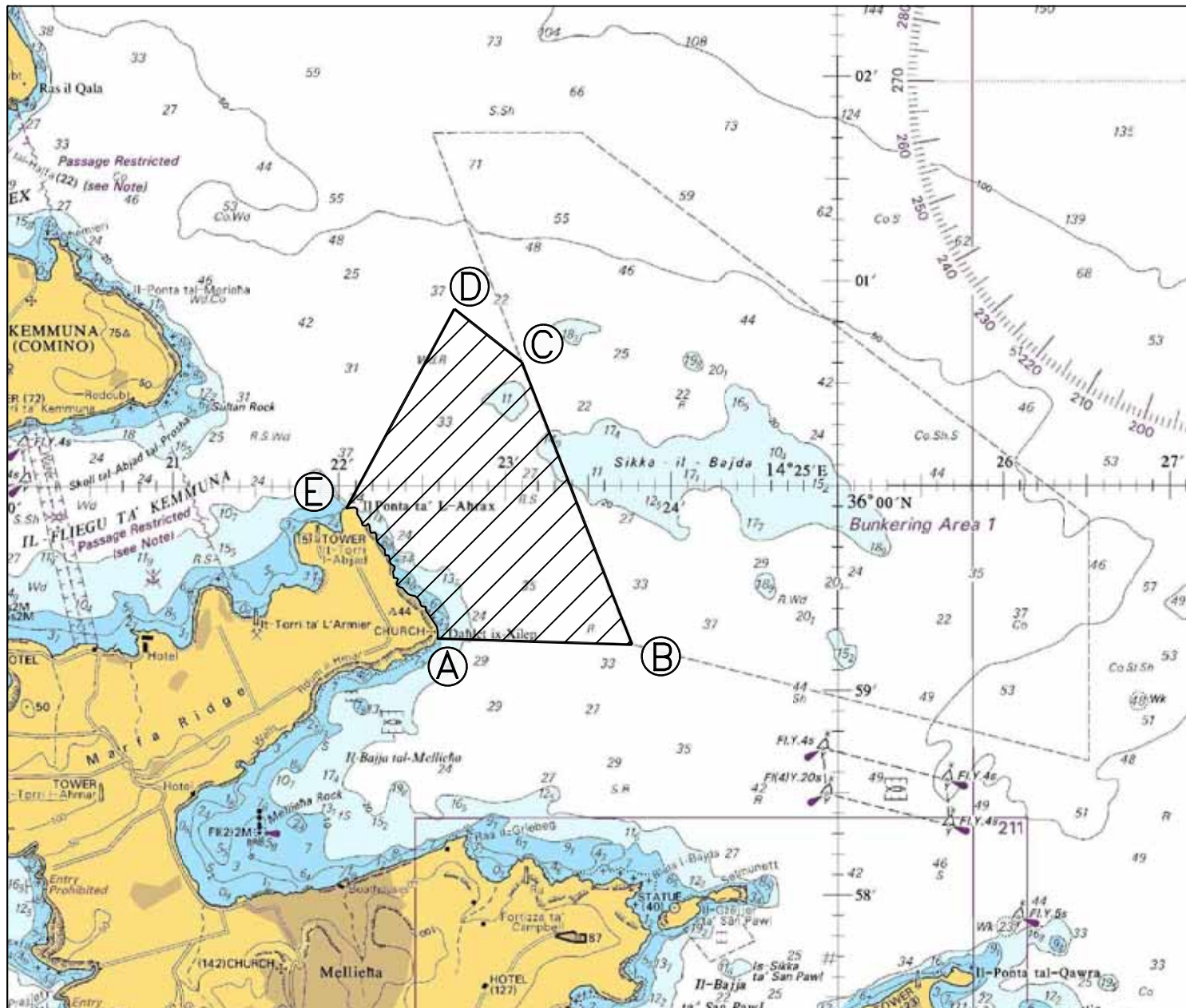
- Lights, other than lights prescribed in the Convention on the International Regulations for Preventing Collisions at Sea, 1972 (COLREGs) have to be switched off and no loud noise, other than sound signals prescribed in the Convention on the International Regulations for Preventing Collisions at Sea, 1972 (COLREGs), from vessels is allowed whilst moving along this stretch of coast.
- Pleasure cruises operating as “Floating Discos” are obliged to follow the above guideline and switch off all lights and music while passing in the indicated area or otherwise keep clear from the buffer zone to the SPA.
- The letting off of petards and other fireworks from sea is not allowed in the buffer zone to the SPA during the above mentioned dates **AT ANY TIME**.
- The buffer zone to the SPA is a “no stopping zone” for all vessels other than vessels carrying out fishing activities.



Malta Transport

- Fishing activities in the area using strong lights (lampara etc) are prohibited in line with Art.4 of the Fishery Regulations (SL425.01) and Council Regulation (EC) No 1967/2006 concerning management

Charts Affected: **BA 211A , 2538, 2537, 194**



©British Crown Copyright 1970, 1983, 1986, 1988, 1999, 2000.
All rights reserved

The UK Hydrographic Office makes the accompanying data available to Malta Maritime Authority under the terms and conditions of agreement HD 1427/020930/01.

DISCLAIMER

Whilst the UK Hydrographic Office has endeavoured to ensure that the material supplied is suitable for the purpose described, it accepts no liability (to the maximum extent permitted by law) for any damage or loss of any nature arising from its use. The material supplied is used entirely at the Recipient's own risk.

7. Id-Direttur tal-Kummerè iżomm id-dritt li jaċċetta jew jirrofta f'parti jew kollha kemm hi kull applikazzjoni li tasallu.

8. L-offerti għandhom jibqgħu sodi u validi għal ta' l-inqas għaxart (10) ijiem tax-xogħol mid-data ta' l-egħluq.

9. L-applikanti li jingħataw l-offerta jkunu meħtieġa li jbiegħu l-kunserva kif jiġi ordnat mid-Dipartiment tal-Kummerè bil-prezz *ex-warehouse* li mghandux ikun iżjed minn 5% tal-prezz CIF u d-dazju li jithallas fuqha.

10. L-applikant li jintgħażel ikun meħtieġ, qabel ma tinħareġ il-liċenza, li jibgħat *Performance Bond* ekwivalenti għal 10% tal-valur totali CIF ta' l-ordni soda u ta' l-għażla, biex jiggarrantixxi l-obbligu tiegħu skond il-ħruġ tal-liċenza.

11. Aktar tagħrif jista' jinkiseb mid-Dipartiment tal-Kummerè, Tel. Nru. 235392.

Il-11 ta' Awissu, 1987

Spizeriji li Jifthi l-Hadd

Għandha ssir l-emenda li ġejja fil-Lista ta' Spizeriji li jifthi nhar ta' Hadd, ippubblikata fil-Gazetta tal-Gvern;—

IL-ĦAMRUN, IL-MARSA, STA. VENERA

Il-Hadd, it-30 ta' Awissu, 1987

Hasar

Thomas' Pharmacy,
796, Triq Irjali San Guzepp,
Il-Ħamrun

Dahħal

Darwin Pharmacy,
152, Triq Irjali San Guzepp,
Il-Ħamrun

Il-11 ta' Awissu, 1987

Avviz Lokali lill-Baħħara Nru. 16 ta' l-1987

L-ebda vapur jew dgħajsa jew xi ingeni oħra ma jistgħu jirmigġjaw jew ibahħru f'raġġ ta' mil nawtiku 'l hinn mill-gżira ta' Filfla; l-ebda persuna ma tista' tgħum jew tagħmel attivitajiet ta' għads taħt il-baħar; hadd ma' għandu jagħmel tkarkir jew jixhet parit jew jiffa' ankra jew jagħmel xi hidma oħra li għandha x'taqsam ma' sajd, tkarkir, eċċ kemm-il darba ma jkollux il-permess bil-miktub mingħand id-Direttur tal-Portijiet.

Iż-żona ipprojbata tinsab f'ċirku b'raġġ ta' 1.1 mili nawtiċi fuq il-co-ordinates li ġejjin:—

Latitude 35°47'37N Longitude 14°24'60E

Il-11 ta' Awissu, 1987

7. The Director of Trade reserves the right to accept or reject in part or in full any of the applications received.

8. Offers are to be made firm and valid for at least ten (10) working days from closing date.

9. Successful applicants shall be required to sell the tomato paste as directed by the Department of Trade at an ex-warehouse price which will not exceed by 5% the CIF price and duty payable thereon.

10. The successful applicant shall be required, prior to the issue of the licence, to submit a Performance Bond equivalent to 10% of total CIF value of the firm order and of the option, in due fulfilment of his obligations under the issue of the licence.

11. Any further information may be obtained from the Department of Trade, Tel. No. 235392.

11th August, 1987

Dispensaries to Open on Sundays

The following amendment should be made to the List of Dispensaries required to open on Sundays, published in the Government Gazette:—

HAMRUN, MARSA, STA. VENERA

Sunday, 30th August, 1987

Delete

Thomas' Pharmacy,
796, St Joseph High Road,
Hamrun

Insert

Darwin Pharmacy,
152, St Joseph High Road,
Hamrun

11th August, 1987

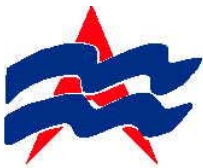
Local Notice to Mariners No. 16 of 1987

No vessel or boat or any craft may berth or navigate within one nautical mile radius off the island of Filfla; no person may swim or carry out activities connected with underwater diving; no one is permitted to carry out trawling or trammelling or drop any anchor or carry out any other activity connected with fishing, trawling, etc., unless the person/s concerned is/are in possession of a written permit from the Director of Ports.

The prohibited zone is within a circle of radius 1.1 nautical miles centred on the following co-ordinates:—

Latitude 35°47'37N Longitude 14°24'60E

11th August, 1987



MALTA MARITIME AUTHORITY

NOTICE TO MARINERS NO 67 OF 2004

Conservation Area Off il-Merkanti Shoals

The Malta Environment and Planning Authority in the past weeks has laid several artificial reefs between St George's shoals and St Julians Point.

The intention is to carry out studies so as to determine fish density and species richness over a long period of time.

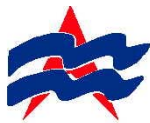
In view of the above mariners are to note that a conservation area has been established between the following points:

	LATITUDE (N)	LONGITUDE (E)
POINT A	35°56'.090	14°30'.082
POINT B	35°55'.186	14°30'.485
POINT C	35°55'.443	14°30'.054

Spear fishing and the use of fishing gear such as set bottom lines, trammel nets, encircling gill nets and entangling nets, demmersal pots and traps, are prohibited in the area. Only surface fishing is allowed.

Charts Affected BA 177, 2537, 2538

Position is referred to WGS 84 DATUM



MALTA MARITIME AUTHORITY

Notice to Mariners No 5 of 2008

CONSERVATION AREAS AROUND WRECKS

The Veterinary Regulation and Fisheries Conservation and Control within the Veterinary and Fisheries Affairs Division (VAFD) has set a number of conservation areas around wrecks.

In view of the above, mariners are to note that conservation areas have been established within the points as follows:

LOCATION	WRECK	POINT	LATITUDE (N)	LONGITUDE (E)
Wied iz-Zurrieq	Um el Faroud	A	35° 49.200'	14° 26.917'
		B	35° 49.150'	14° 27.200'
		C	35° 49.067'	14° 27.067'
		D	35° 49.083'	14° 26.833'
Off Xatt l-Ahmar	MV Xlendi Cominoland Karwela	A	36° 01.067'	14° 16.967'
		B	36° 01.083'	14° 17.367'
		C	36° 00.867'	14° 17.367'
		D	36° 00.867'	14° 16.983'
Marsacala	Tug St. Michael Tug 10	A	35° 52.100'	14° 34.550'
		B	35° 51.900'	14° 34.650'
		C	35° 51.817'	14° 34.417'
		D	35° 52.017'	14° 34.300'
Off Qawra point	Imperial Eagle	A	35° 57.983'	14° 26.033'
		B	35° 57.833'	14° 26.233'
		C	35° 57.683'	14° 26.033'
		D	35° 57.833'	14° 25.850'
Off Cirkewwa	Rozi P29	A	35° 59.224'	14° 19.645'
		B	35° 59.148'	14° 19.555'
		C	35° 59.299'	14° 19.365'
		D	35° 59.491'	14° 19.588'
		E	35° 59.387'	14° 19.716'
Off Xrobb l-Ghagin	Blenheim bomber	A	35° 50.267'	14° 34.467'
		B	35° 50.117'	14° 34.667'
		C	35° 49.950'	14° 34.467'
		D	35° 50.117'	14° 34.283'
Off Exiles point	Bristol Beaufighter	A	35° 55.617'	14° 30.183'
		B	35° 55.467'	14° 30.367'
		C	35° 55.300'	14° 30.183'
		D	35° 55.467'	14° 29.983'

These areas are considered as "NO STOPPING AREAS". Anchoring is allowed to divers' vessels ONLY after pre-notification to the Valletta VTS. Masters of diving support vessels are to ensure that the appropriate signals in accordance with the International Convention for the Prevention of Collisions at Sea and the International Code of Signals, are shown at all times. Furthermore, spear fishing and the use of fishing gear such as set bottom lines, trammel nets, gill nets and entangling nets, encircling nets, demersal pots and traps are prohibited in these areas. Only surface fishing is allowed including trolling lines (*rixa*) and angling for pelagic fish.

Charts Affected: BA 177, 194, 211A, 211B, 2537, 2538

Positions are referred to WGS84 DATUM



MALTA MARITIME AUTHORITY

Notice to Mariners No 06 of 2008

Restricted Area between “Ponta ta’ I-Ahrax” and “Dahlet ix-Xilep”

Reference is made to the Malta, EU LIFE project, which is focussed on taking action to protect the Yelkouan Shearwaters (**GARNIJA**), seabirds that breed on cliffs. One such breeding area is located at “Rdum tal-Madonna” on the cliffs between il-Ponta ta’ I-Ahrax and Dahlet ix-Xilep. The “Rdum tal-Madonna” breeding colony has been designated as a “Special Protection Area” because Malta has 10% of the world’s population of Yelkouan Shearwaters and is internationally important for these birds. Light and noise can easily disturb the birds and cause them to desert the colony.

The buffer zone to the “Special Protection Area (SPA)” (about 1.1 Nautical Mile from shore) lies between the following imaginary points and the intermediate coastline:

	LATITUDE (N)	LONGITUDE (E)
(A)	35°59'.268	14°22'.574
(B)	35°59'.231	14°23'.759
(B)	36°01'.124	14°22'.849
(B)	35°59'.901	14°22'.057

In view of the above Masters of all vessels and craft are to adhere to the following conduct while transiting the area between **Friday, 1st February 2008 and Wednesday, 30 July 2008**. The hours between which the conduct is applicable are **2 hours before sunset till 2 hours after sunrise**.

During the above mentioned period:

- Lights, other than lights prescribed in the Convention on the International Regulations for Preventing Collisions at Sea, 1972 (COLREGs) have to be switched off and no loud noise, other than sound signals prescribed in the Convention on the International Regulations for Preventing Collisions at Sea, 1972 (COLREGs), from vessels is allowed whilst moving along this stretch of coast.
- Pleasure cruises operating as “Floating Discos” are obliged to follow the above guideline and switch off all lights and music while passing in the indicated area or otherwise keep clear from the buffer zone to the SPA.
- The letting off of petards and other fireworks from sea is not allowed in the buffer zone to the SPA during the above mentioned dates **AT ANY TIME**.
- The buffer zone to the SPA is a “no stopping zone” for all vessels other than vessels licensed to carry fishing activities.
- Fishing activities in the area using strong lights (lampara etc) are prohibited in line with Art.4 of the Fishery Regulations (SL425.01) and Council Regulation (EC) No 1967/2006 concerning management measures for the sustainable exploitation of fishery resources in the Mediterranean Sea, amending regulation (EEC) No 2847/93 and repealing Regulation (EC) No 1626/94.

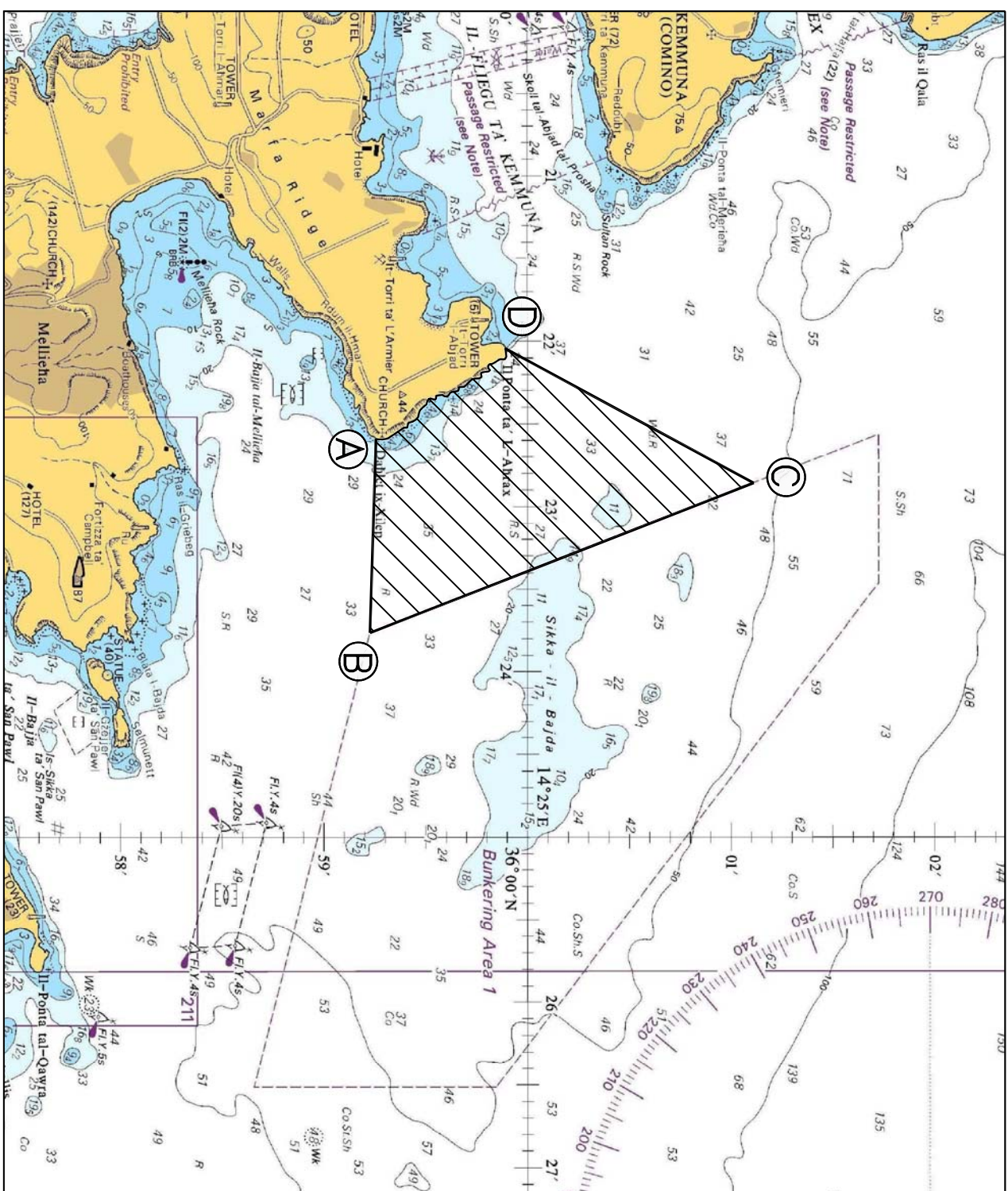
Charts Affected: BA 211A , 2538, 2537, 194

©British Crown Copyright 1970, 1983, 1986, 1988, 1999, 2000.
All rights reserved

The UK Hydrographic Office makes the accompanying data available to Malta Maritime Authority under the terms and conditions of agreement HD 1427/020930/01.

DISCLAIMER

Whilst the UK Hydrographic Office has endeavoured to ensure that the material supplied is suitable for the purposes described, it accepts no liability (to the maximum extent permitted by law) for any damage or loss of any nature arising from its use. The material supplied is used entirely at the Recipient's own risk.





Ports and Yachting Directorate



Malta Transport

NOTICE TO MARINERS NO 02 OF 2010

Our Ref: MT/PYD/88/06

15 January 2010

Malta Transport
Malta Transport Centre
Xatt l-Għassara ta' l-Għeneb
Marsa, MRS 1917,
Malta

Tel: (356) 2122 2203
Fax: (356) 2125 0365
Email: info@transport.gov.mt

www.transport.gov.mt

Restricted Area between “Ponta ta’ l-Ahrax” and “Dahlet ix-Xilep”

The Ports and Yachting Directorate, Malta Transport notifies that as part of an EU LIFE project, aimed at protecting the Yelkouan Shearwaters (**GARNIJA**), seabirds that breed on cliffs a restricted area is established. One such breeding area is located at “Rdum tal-Madonna” on the cliffs between il-Ponta ta’ l-Ahrax and Dahlet ix-Xilep. The “Rdum tal-Madonna” breeding colony has been designated as a “Special Protection Area” because Malta has 10% of the world’s population of Yelkouan Shearwaters and is internationally important for these birds. Light and noise can easily disturb the birds and cause them to desert the colony.

The buffer zone to the “Special Protection Area (SPA)” (about 1.1 Nautical Mile from shore) lies between the following imaginary points and the intermediate coastline:

	LATITUDE (N)	LONGITUDE (E)
(A)	35°59'.268	14°22'.574
(B)	35°59'.231	14°23'.759
(C)	36°00'.624	14°23'.088
(D)	36°00'.874	14°22'.692
(E)	35°59'.901	14°22'.057

In view of the above Masters of all vessels and craft are to adhere to the following conduct while transiting the area between **1st February and 30 July - every year**. The hours between which the conduct is applicable are **2 hours before sunset till 2 hours after sunrise**.

During the above mentioned period:

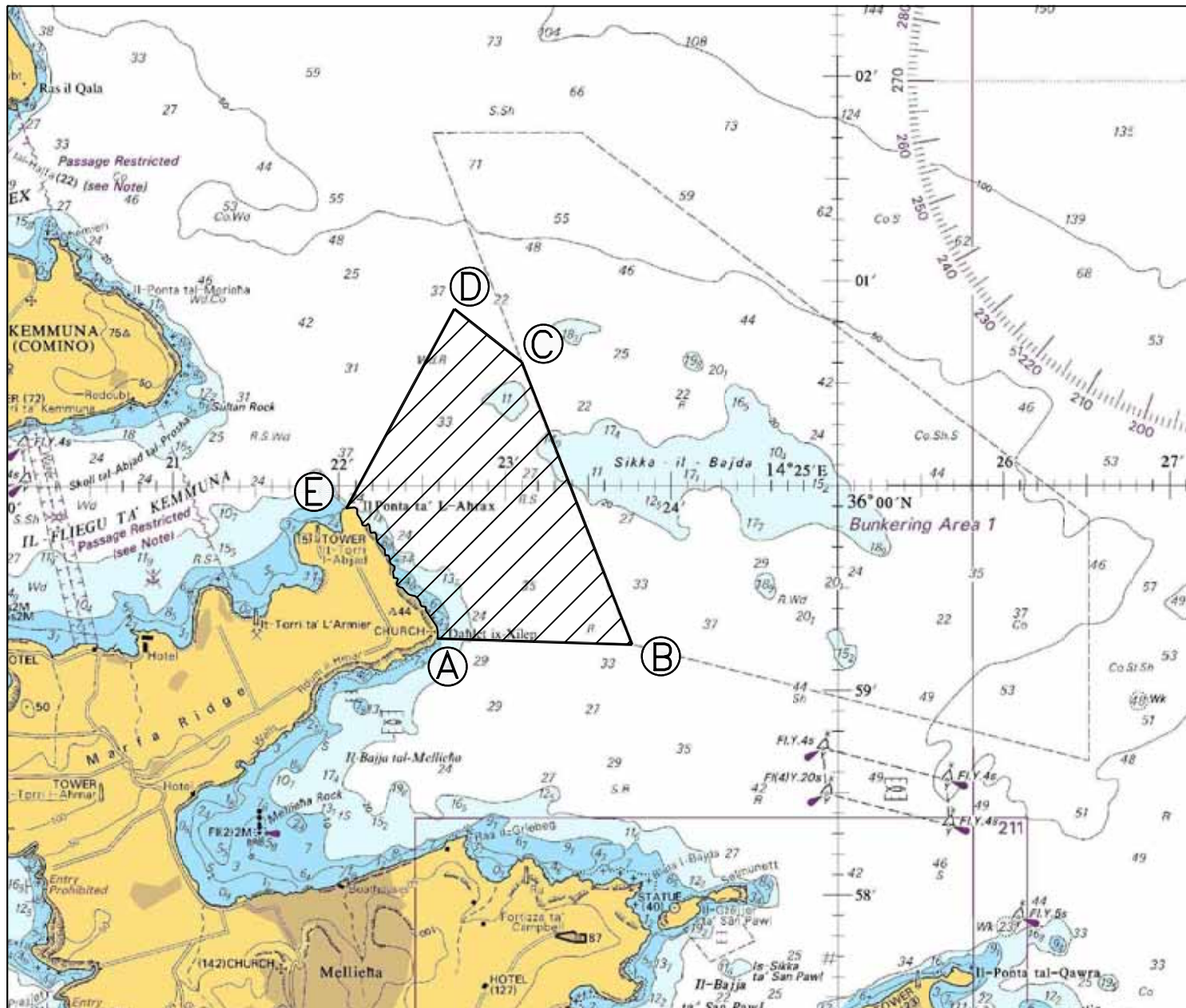
- Lights, other than lights prescribed in the Convention on the International Regulations for Preventing Collisions at Sea, 1972 (COLREGs) have to be switched off and no loud noise, other than sound signals prescribed in the Convention on the International Regulations for Preventing Collisions at Sea, 1972 (COLREGs), from vessels is allowed whilst moving along this stretch of coast.
- Pleasure cruises operating as “Floating Discos” are obliged to follow the above guideline and switch off all lights and music while passing in the indicated area or otherwise keep clear from the buffer zone to the SPA.
- The letting off of petards and other fireworks from sea is not allowed in the buffer zone to the SPA during the above mentioned dates **AT ANY TIME**.
- The buffer zone to the SPA is a “no stopping zone” for all vessels other than vessels carrying out fishing activities.



Malta Transport

- Fishing activities in the area using strong lights (lampara etc) are prohibited in line with Art.4 of the Fishery Regulations (SL425.01) and Council Regulation (EC) No 1967/2006 concerning management

Charts Affected: BA 211A , 2538, 2537, 194



©British Crown Copyright 1970, 1983, 1986, 1988, 1999, 2000.
All rights reserved

The UK Hydrographic Office makes the accompanying data
available to Malta Maritime Authority under the terms and
conditions of agreement HD 1427/020930/01.

DISCLAIMER

Whilst the UK Hydrographic Office has endeavoured to ensure
that the material supplied is suitable for the purpose described,
it accepts no liability (to the maximum extent permitted by law)
for any damage or loss of any nature arising from its use.
The material supplied is used entirely at the Recipient's own risk.



Transport Malta

Malta Transport Centre
Marsa, MRS 1917
Malta

Tel: (356) 2122 2203
Fax: (356) 2125 0365
Email: info.tm@transport.gov.mt

www.transport.gov.mt

PORTS AND YACHTING DIRECTORATE

NOTICE TO MARINERS NO 09 of 2010

Our Ref: **TM/PYD/ 299/81 Vol X**

Date: **5 March, 2010**

Chart Correction

Reference is made to BA Chart 2538 – Malta (South East).

The Ports and Yachting Directorate, Transport Malta, notifies mariners that the East Cardinal Light Buoy at Outer Munxar reef has **MOVED** to position:

Latitude (N)

Longitude (E)

35° 50'.982

14° 35'.940

Mariners are advised to note the above and proceed with caution and slow speed when navigating in the area.

Chart Affected: BA Chart 2538, 194

